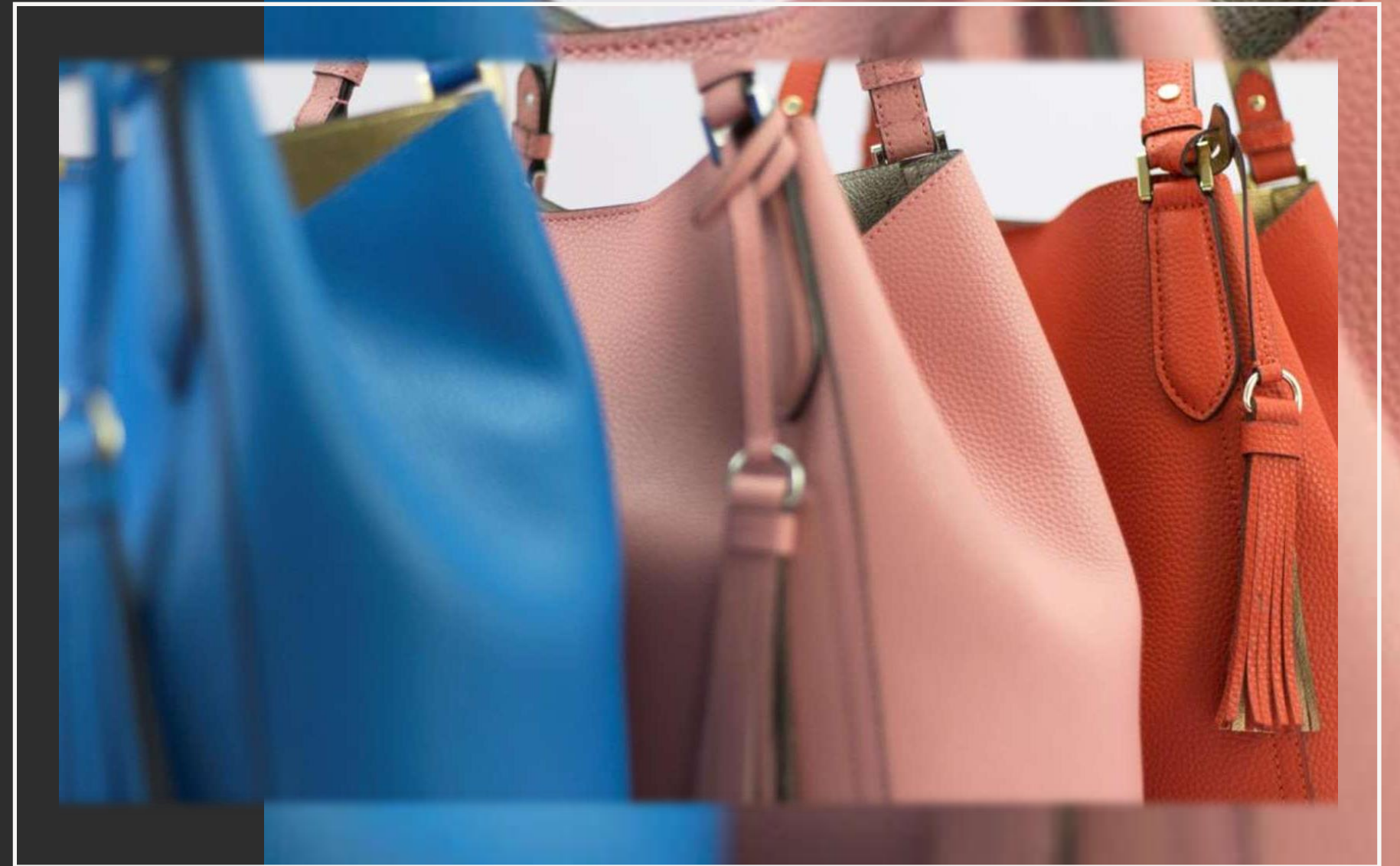


Company

TANGERINE SKIES PVT. LTD.

The Best Accessories Design and
Manufacturing solution provider



ABOUT US



- Founded in June 2013
- Achieved a turnover of US\$ 56 million within 10 years of operations
- Separate factories with exclusive capacities for belts, footwear, bags and small leather goods
- Raw material sourcing capabilities across the Far East, Europe, Middle East and South America.
- State of the art in-house leather finishing unit

VISION

To be the best manufacturer
in our product class.



Our Values

- Transparency
- Ethical Organisation
- Gandhian Servant Leadership
- Engagement with Mutual Trust and respect
- Kaizen Mindset
- Empowerment
- Anti-discrimination

MISSION

Drive manufacturing excellence by

- Sustainability
- Design & Innovation
- Being responsible employers
- Product Integrity
- Employee Pride Inclusivity
- through social engineering, resulting in value creation for stakeholders and society



TANGERINE ADVANTAGE



DESIGN

Strong Emphasis laid on Research and Design of new Raw materials and concepts

Product Range

Diversified Product range and one stop shop across all leather and mix media accessories spectrum

Sourcing Network

Extensive Raw material and sourcing network across continents

Best In class Manufacturing

Modern Manichery, dedicated professionals



EXCELLENCE THROUGH DESIGN



- Exclusive designers for each product category
- Seasonal trend presentations to all customers based on extensive research.
- Design Studio acts as melting pot for ideas/ concepts across brands
- Team of 200+ skilled workforce to make samples. This includes specialized artisans for weaving and braiding leather, for creating fabrics, embroideries, crochets and patchworks.



INFRASTRUCTURE

- 4 factories based in Gurugram, more than 3,00,000 sqft of work area
 - 300+ Adler sewing machines and automatic sewing machines. State of art " Cut to pack " setup with Single piece flow in the production lines.
 - Nearly 3500 employees
-

TANGERINE SKIES

HAND BAG DIVISION

EXCELLENCE PURSUED

11-04-2022

CONTINUOUS IMPROVEMENT

NO OF SKILLED MEMBERS

- ★ DIV 1 - 1000
 - ★ DIV 2 (COACH)-770
-

CAPACITY BAGS PER MONTH

- ★ DIV 1-1,00,000
 - ★ DIV 2 (COACH)-60,000
-

CURRENT CAPACITY UTILISATION

- ★ DIV 1-75%
 - ★ DIV 2 (COACH)-75-80 %
-

PRODUCT PORTFOLIO

BAGS- DIV 1



PRODUCT PORTFOLIO

BAGS- DIV- COACH

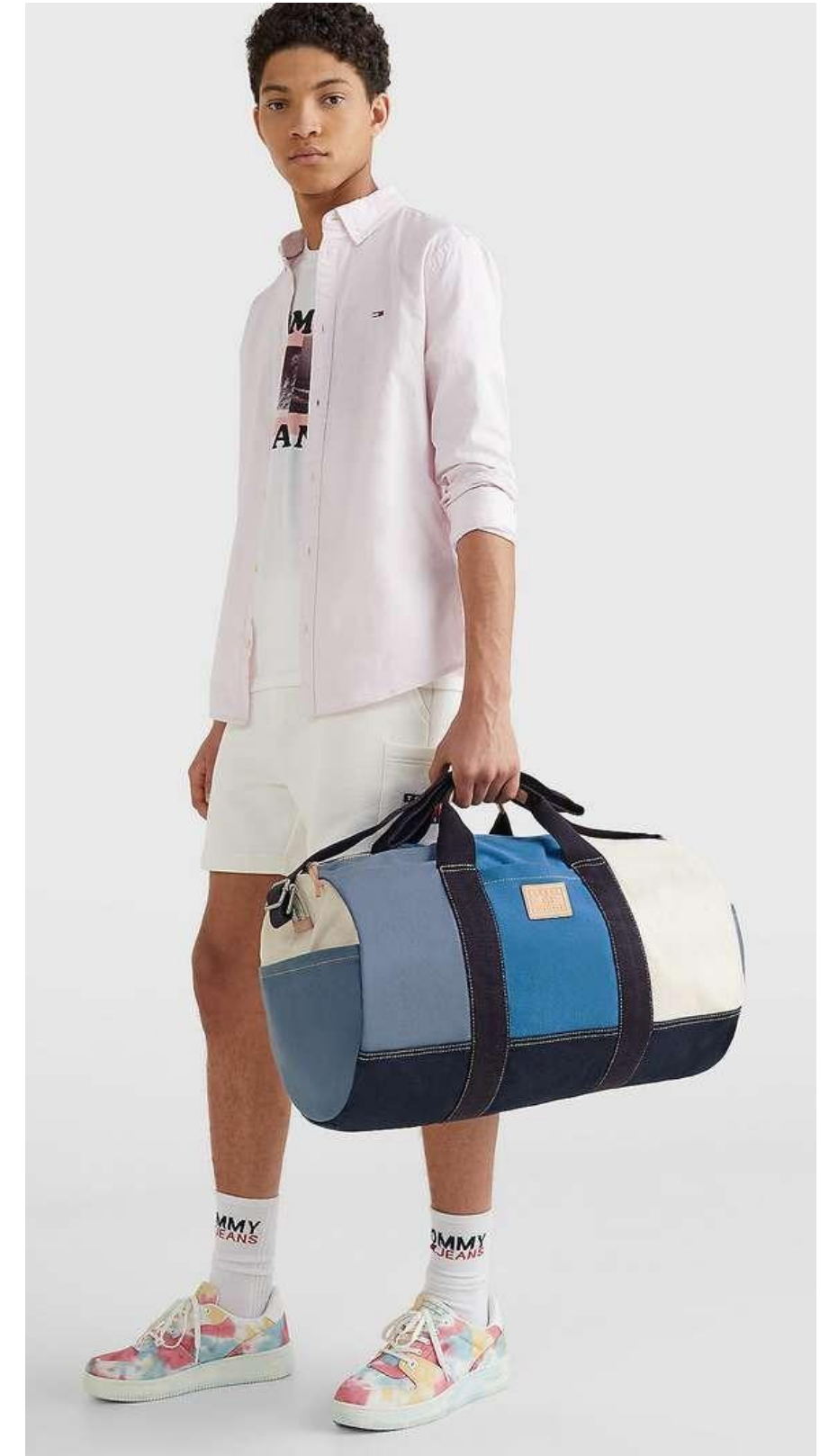


PRODUCT PORTFOLIO BAGS

State of art machines along with experienced personnel, is adapt in manufacturing of Clean Chic, Embroidered, Crochet, Mix media and Vintage washed bags .



PRODUCT PORTFOLIO BAGS



COMPLIANCES



PVH

+ELEVATE

Global Security
Verification (GSV) :
Supply Chain Security



PRODUCT PORTFOLIO BAGS



INDITEX

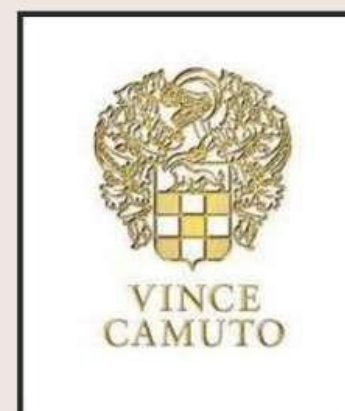


Handbags @ Tangerine Design

Our Brand Partners



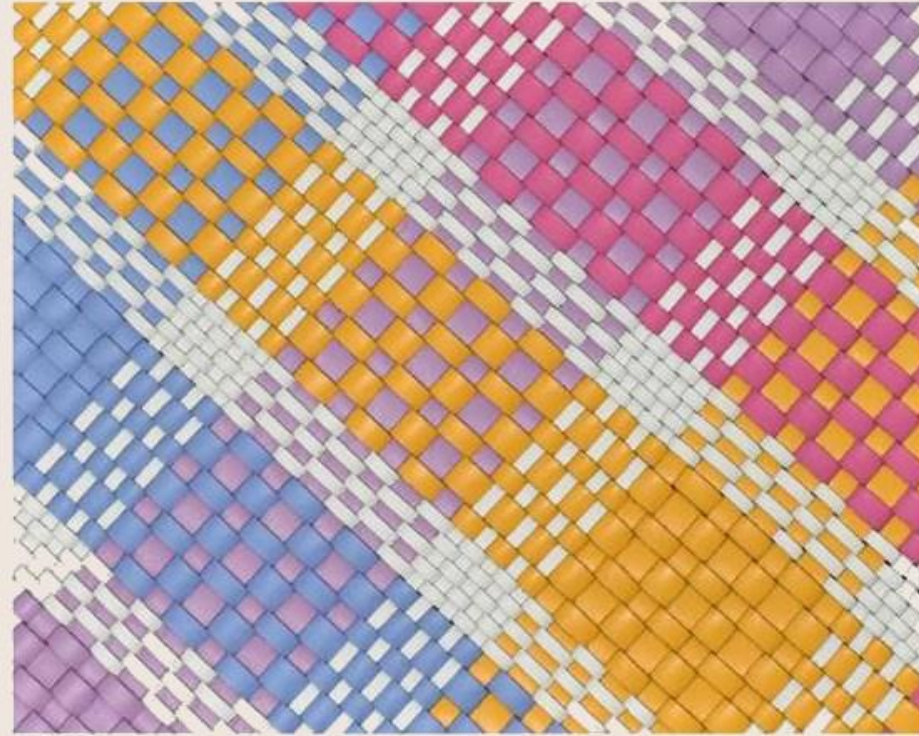
ZARA



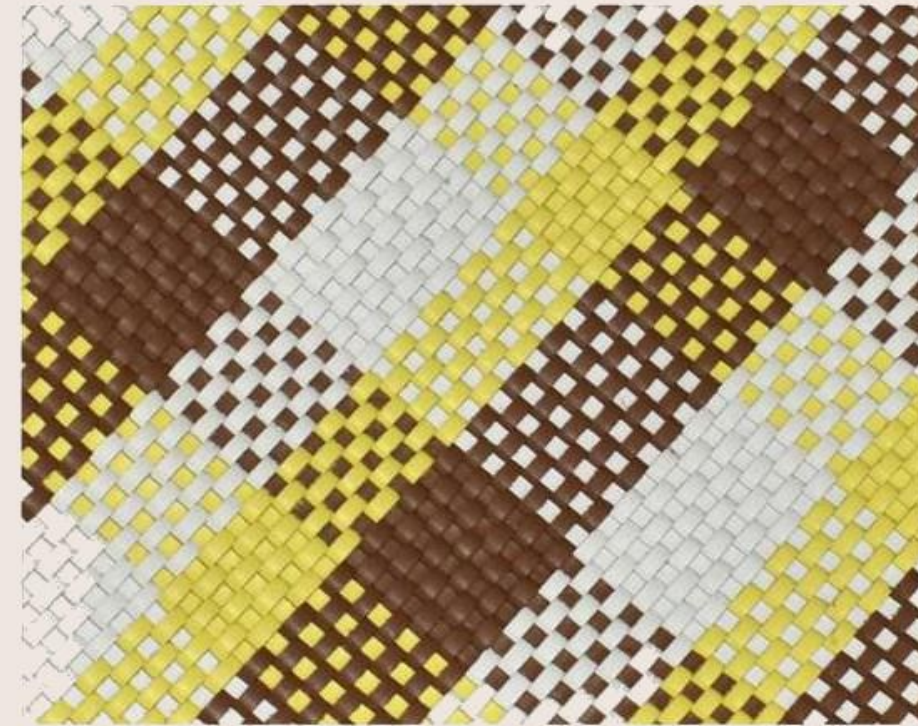
DESIGN AND INNOVATION BAGS

Design concepts
SS' 2023
Leather Woven

*all concept designed at tangerine studio.
we are only at liberty to show those
concepts that have not been chosen by
our valued customers.*



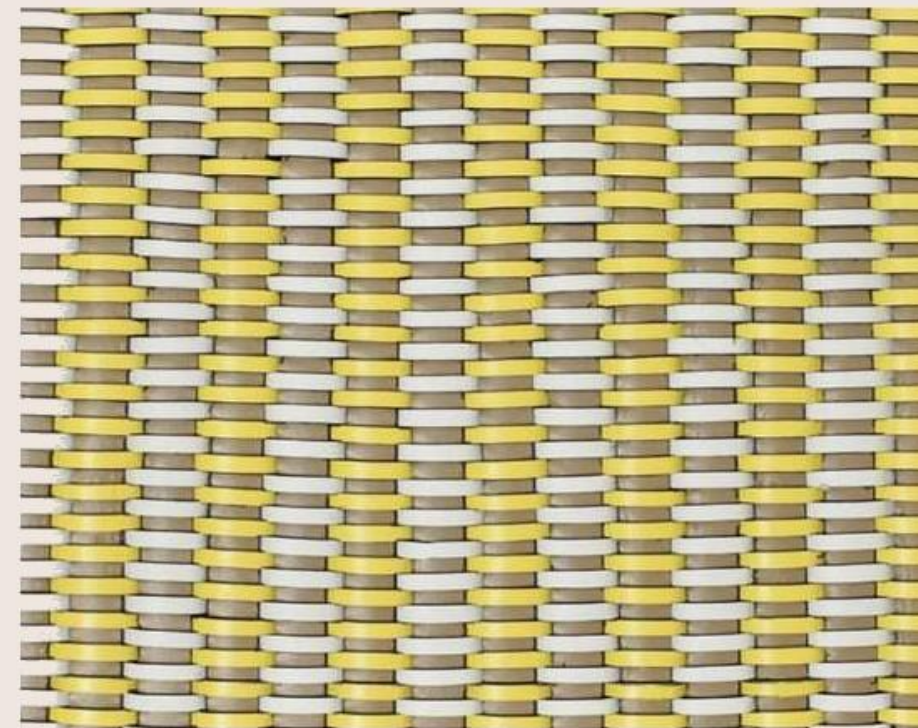
Td-sw-09



Td-sw-10



Td-sw-11



Td-sw-12

DESIGN AND INNOVATION

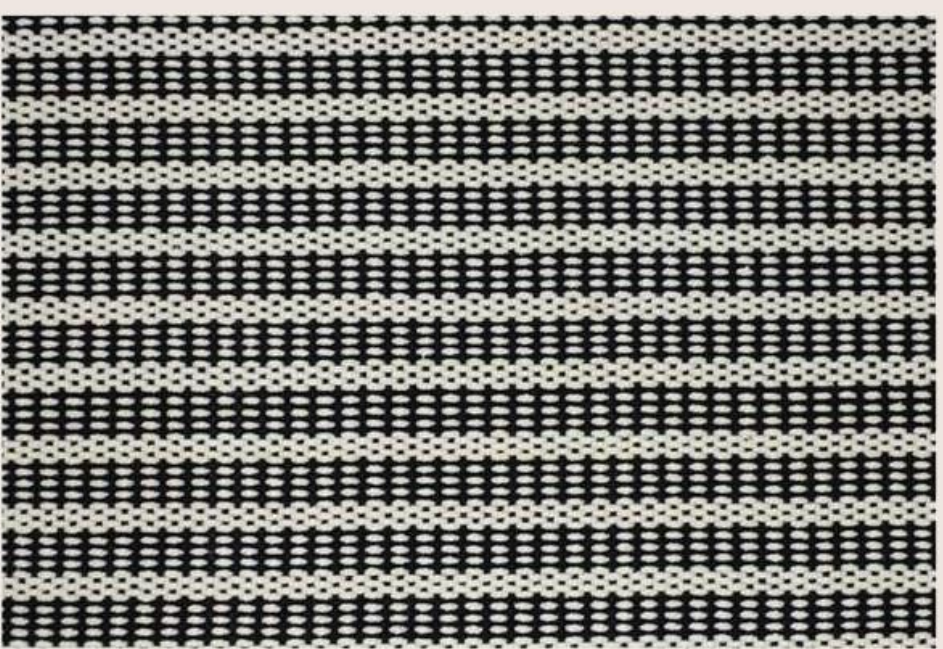
BAGS

Design concepts
SS' 2023
Fabric Woven

*all concept designed at tangerine studio.
we are only at liberty to show those
concepts that have not been chosen by
our valued customers.*



Td-sw-01



Td-sw-02



Td-sw-03



Td-sw-04

DESIGN AND INNOVATION BAGS

*all concept designed at tangerine studio.
we are only at liberty to show those
concepts that have not been chosen by
our valued customers.*

Design concepts
SS' 2023
Raffia embroidery

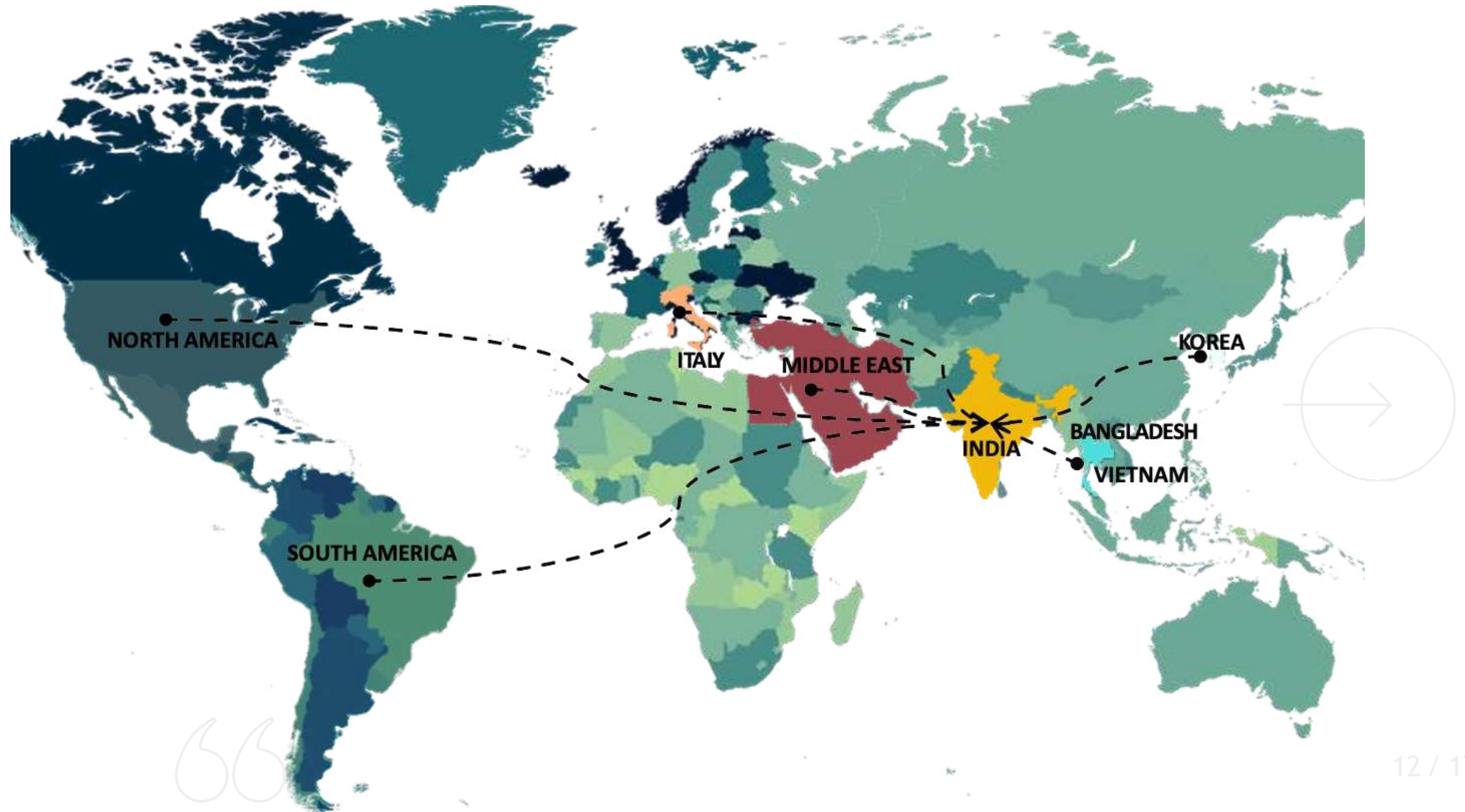


Td-sw-29



Td-sw-30

Global Sourcing Network of leather/ Raw Hides



Local Sourcing Network of leather/ Raw Hides



- The basic raw materials available in India for belting leather are Indian Buffalo.
- We at Tangerine, tan our Indian raw buffalo with imported veg chemicals while using Italian techniques.
- However, to ensure the finest quality leather, we buy our leather as per the right category and season.



OUR MACHINERY



XL COMELZ PLOTTER AND CUTTER

In addition to the conventional cutting methods of clicking machine and hand cutting, we have XL size Comelz plotter and Cutter

OUR MACHINERY



AUTOMATIC GLUING MACHINES

OUR MACHINERY



INLINE EMBOSSING MACHINES--FOR EMBOSSING
COMPLETE SH STRAPS AND SMALL COMPONENTS

OUR MACHINERY



LONG STRAP DRYING
HEAT CHAMBER



BOTTOM SETTING MACHINE

OUR MACHINERY



LASER CUTTING
MACHINE



AUTOMATIC STITCHING
MACHINES MACHINE

OUR MACHINERY



ROTATING ARM STITCHING
MACHINE



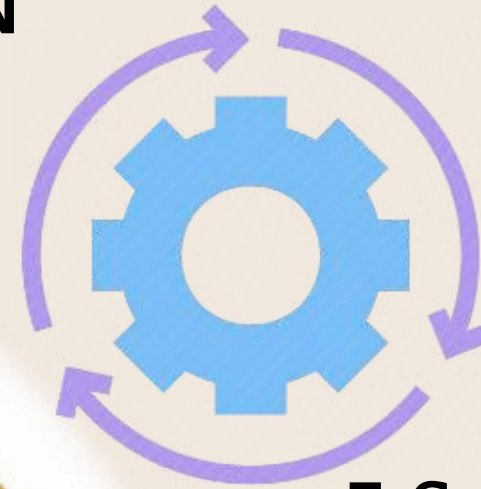
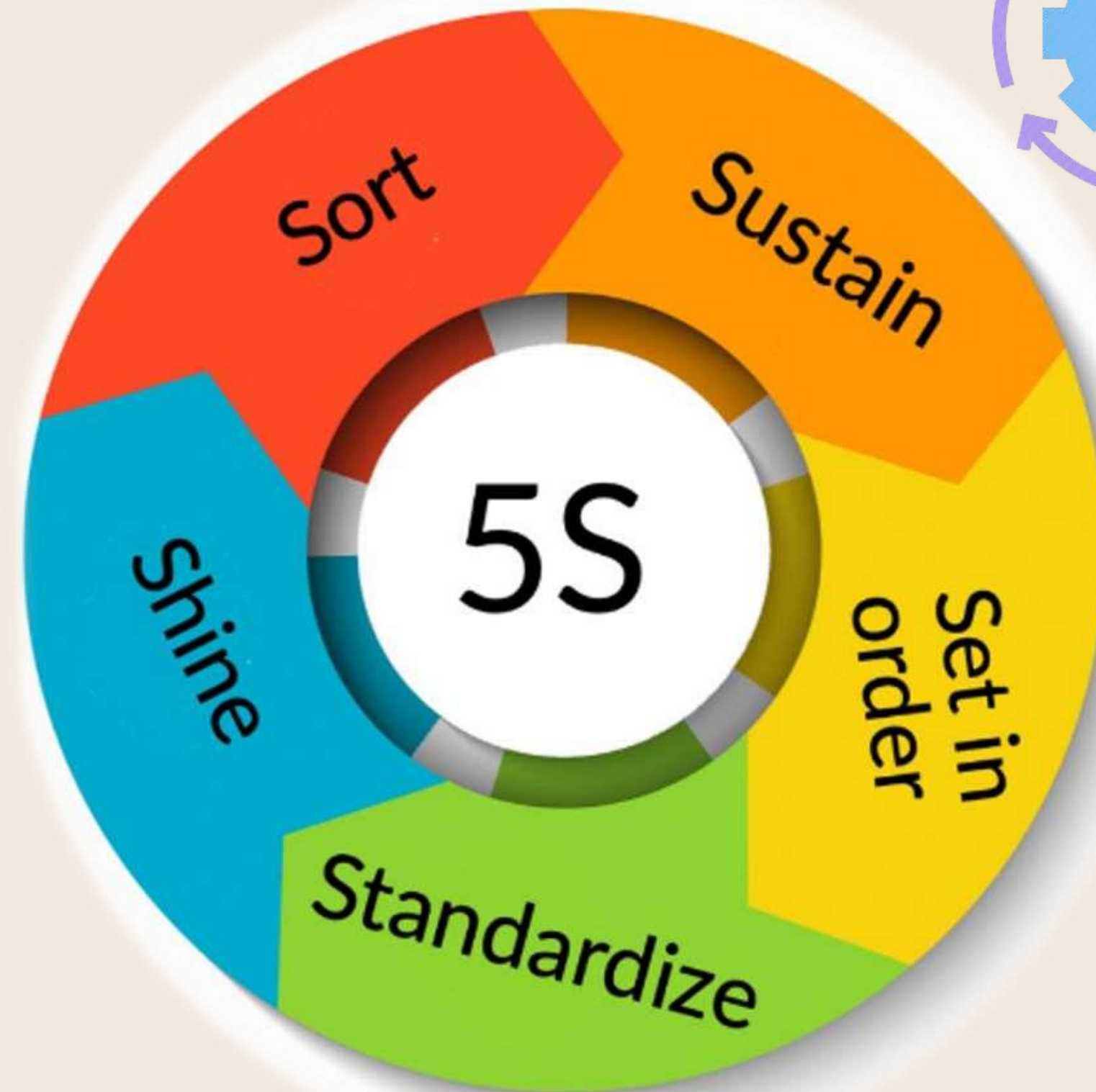
COMPONENTS PRESSING
MACHINE

OUR PRODUCTION METHOD



SINGLE PIECE MOVEMENT FOR GREATER VISIBILITY

ENHANCED PRODUCTION EFFICIENCY



5 S / LEAN

SAVES ENERGY AND
MATERIALS. REDUCES
MANUFACTURING
LEAD TIMES

AUTOMATION

REDUCES OR
ELIMINATES ROUTINE
MANUAL AND
CLERICAL TASKS

YAMAZUMI

IMPROVES QUALITY,
ACCURACY &
OPTIMUM
UTILIZATION OF
RESOURCES

WE REALISE THAT
IMPROVEMENT
ACROSS ALL OF THESE
ARE RELATED YET
DISTINCT AREAS AND
REQUIRE ONGING
ANALYSIS OF THE
CURRENT SYSTEMS
AND PRACTICES

THE SUSTAINABILITY STORY

Tangerine is an impact-driven business with a unique impact story, valuing both social and environmental sustainability. TD uses traditional handlooms as a mean to upcycle recycled yarns into high-quality fabrics, hereby practicing a locally embedded and cultural relevant model towards a socially fair and circular textiles sector. Below you will find our impact indicators.



The production process of our fabrics requires only manpower, where as machine looms can require up to 126 kwh which can equals up to 93 KG of CO2 emissions.

By using hand weaving for our fabrics, TD is preserving skills passed down for generations. The weavers enjoy their work more than working operating machinery. Our weavers acquire and master an actual skill, rather than operating machinery, which is made highly relevant for a circular textiles economy.

Responsible Sourcing

Leathers through LWG certified tanneries

Chrome-free leather

Usage of vegetable tanned leather

Fabrics

We are transitioning to fabrics that are Oeko-Tex, GOTS and GRS certified. We also use recycled nylon, recycled polyester and recycled cotton.

Packaging

Usage of cellulose based tapes and soy-based printing inks

Code of Conduct

We have policies that support anti-corruption, human rights, labor, equal opportunities, diversity, health and safety.



The roots of our longevity lies in the sense of responsibility, a quest for authenticity and respect for time and natural resources. We wish to leave a positive imprint on the world.

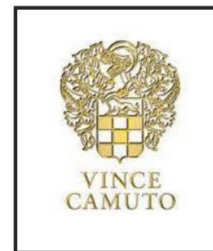
The communities that we belong to and the materials that are derived from our environment are at the heart of our very existence.

As a company , more than ever we are looking at best way of doing things in each are of our business, from supply chain and materials to our teams and charitable endeavours.

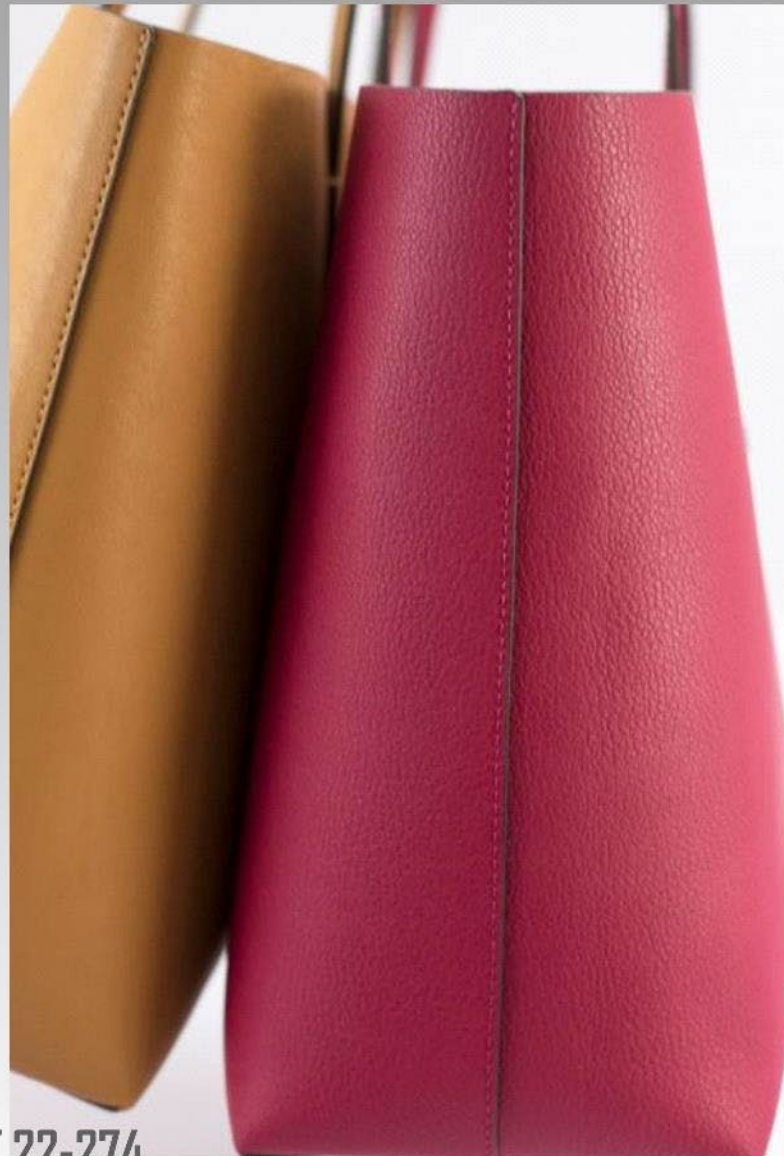
ENVIRONMENTAL INITIATIVES



Our Brand Partners



LEATHER BAGS



TD.BG.SEPT.22-274

LEATHER TOTE



TD.BG.SEPT.22-275

LEATHER HOBO



TD.BG.SEPT.22-276

LEATHER ACROSS BODY BAG



TD.BG.SEPT.22-277

LEATHER DOME ACROSS BODY BAG



TD.BG.SEPT.22-278

LEATHER ACROSS BODY CAMERA BAG



TD.BG.SEPT.22-278

LEATHER SADDLE ACROSS BODY BAG



TD.BG.SEPT.22-246

TEXTURED LEATHER DOME ACROSS BODY BAG



TD.BG.SEPT.22-253

LEATHER ACROSS BODY BAG WITH LEATHER WRAPPED DETAILING ON GUSSET



TD.BG.SEPT.22-267

METALLIC LEATHER ACROSS BODY BAG



TD.BG.SEPT.22-211

LEATHER ACROSS BODY BAG WITH WHIP STITCH EDGE



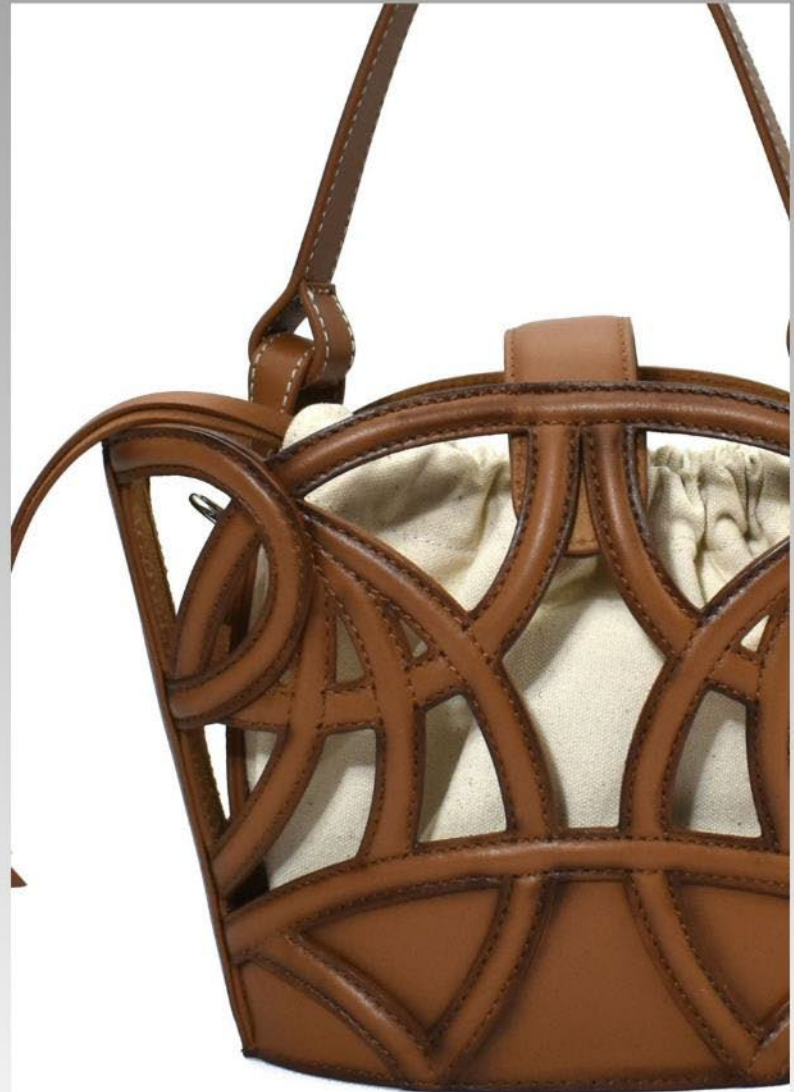
TD.BG.SEPT.22-238

LEATHER ACROSS BODY WITH WICKER RING DETAIL



TD.BG.SEPT.22-236

WOVEN LEATHER MINI ACROSS BODY BAG



TD.BG.SEPT.22-210

LEATHER CUTOUT MINI BUCKET WITH DRAWSTRING BAG



TD.BG.SEPT.22-241

SOFT PUFFED SHOULDER BAG



TD.BG.SEPT.22-254

BUTTERFLY PRINTED LEATHER ACROSS BODY BAG WITH TORT LOCK



TD.BG.SEPT.22-248

FLORAL PRINTED PU TOTE WITH LEATHER INTERLACED HANDLE



TD.BG.SEPT.22-263

PRINTED LEATHER TOTE WITH LEATHER TRIMS



10.BG.SEPT.22-268

PRINTED LEATHER TOTE BAG WITH LEATHER TRIMS

PU BAGS



TD.BG.SEPT.22-220

LEATHER FRINGE SHOULDER BAG



TD.BG.SEPT.22-221

LEATHER QUILTED HOBO WITH METAL CHAIN HANDLE



TD.BG.SEPT.22-221

LEATHER QUILTED HOBO WITH METAL CHAIN HANDLE



TD.BG.SEPT.22-310

PU ACROSS BODY BAG



TD.BG.SEPT.22-312

PU ACROSS BODY CAMERA BAG



TD.BG.SEPT.22-313

PU TOTE BAG

RAFFIA & CROCHET BAGS



TD.BG.SEPT.22-270

WICKER CHAIR WEAVE DOME ACROSS BODY BAG WITH LEATHER TRIMS



TD.BG.SEP.T.22-271

RAFFIA DOME ACROSS BODY BAG WITH LEATHER TRIMS



TD.BG.SEPT.22-260

RAFFIA ACROSS BODY BAG WITH LEATHER TRIMS



TD.BG.SEPT.22-206

RAFFIA ACROSS BODY BAG WITH LEATHER TRIMS



TD.BG.SEPT.22-315

RAFFIA BEACH BAG



TD.BG.SEPT.22-346

COTTON CORD EMBROIDERY BUCKET BAG



TD.BG.SEPT.22-343

RAFFIA TOTE BAG



TD.BG.SEPT.22-342

JERSEY CROCHET LEATHER FRAME BAG



TD.BG.SEPT.22-341

RAFFIA TOTE BAG



TD.BG.SEPT.22-340

RAFFIA CLUTCH



TD.BG.SEPT.22-345

COTTON ROPE MACRAME BAG



TD.BG.SEPT.22-344

COTTON ROPE MACRAME BAG

FABRIC BAGS



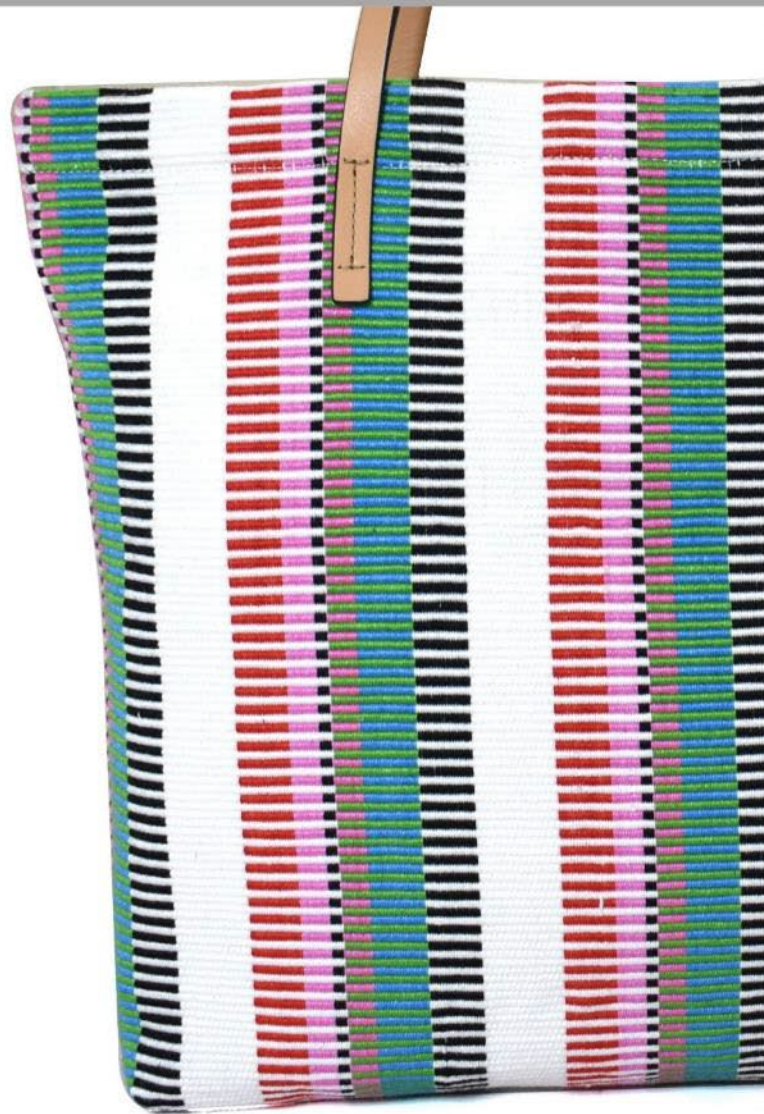
TD.BG.SEPT.22-257

RECYCLED CHECK FABRIC TOTE



TD.BG.SEPT.22-244

TOTE IN HANDLOOM FABRIC MADE WITH LEATHER & YARN



TD.BG.SEPT.22-245

MULTI COLOR HANDLOOM FABRIC SHOPPER



TD.BG.SEPT.22-249

MIX MATERIAL WOOLEN PLAID TOTE



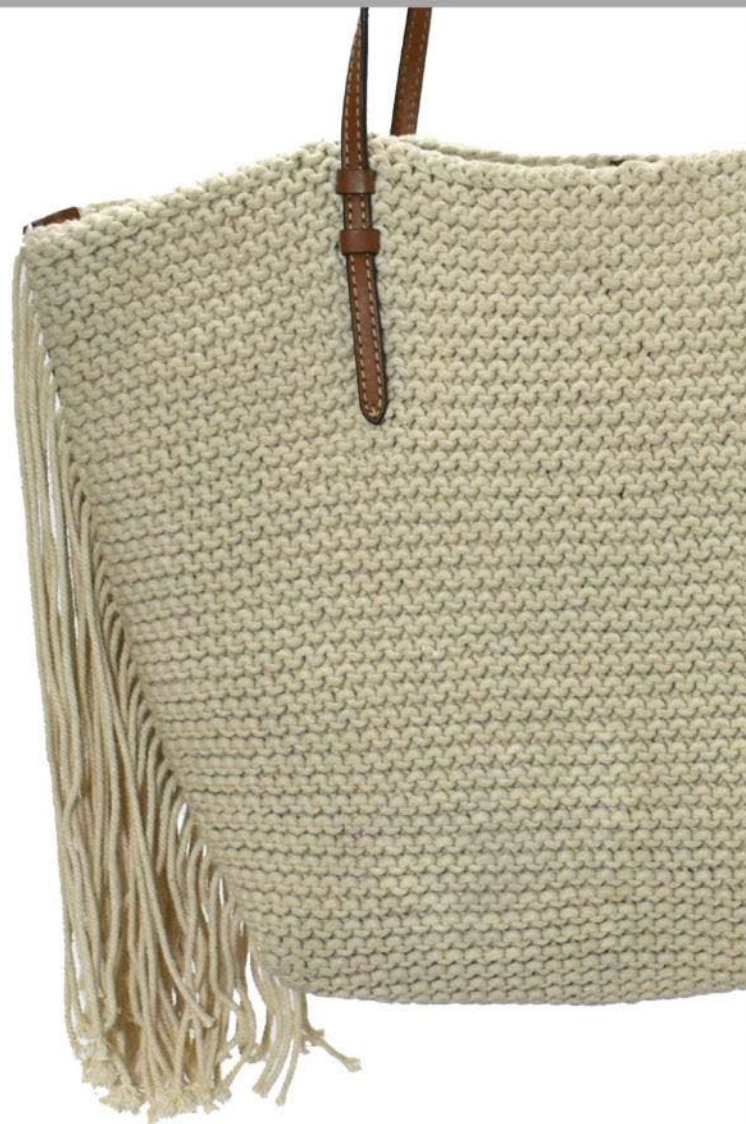
TD.BG.SEPT.22-250

KNITTED FABRIC SOFT TOTE



TD.BG.SEPT.22-237

COTTON CORD WOVEN BOAT SHOPPER



TD.BG.SEPT.22-204

COTTON CORD KNITTED BAG



TD.BG.SEPT.22-243

PRINTED POLYESTER PUFFY BAG



TD.BG.SEPT.22-247

DENIM TOTE WITH LEATHER TRIMS

BEADED BAGS



TD.BG.SEPT.22-349

BEADED SHOULDER BAG



TD.BG.SEPT.22-348

SEQUINED SHOULDER BAG



TD.BG.SEPT.22-347

BEADED SHOULDER BAG

CONCEPT SWATCHES

all concept designed at tangerine studio.
we are only at liberty to show those
concepts that have not been chosen by
our valued customers.

Design concepts

SS' 2023

Raffia embroidery



Td-suv-29



Td-suv-30